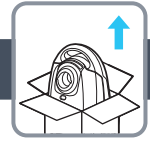





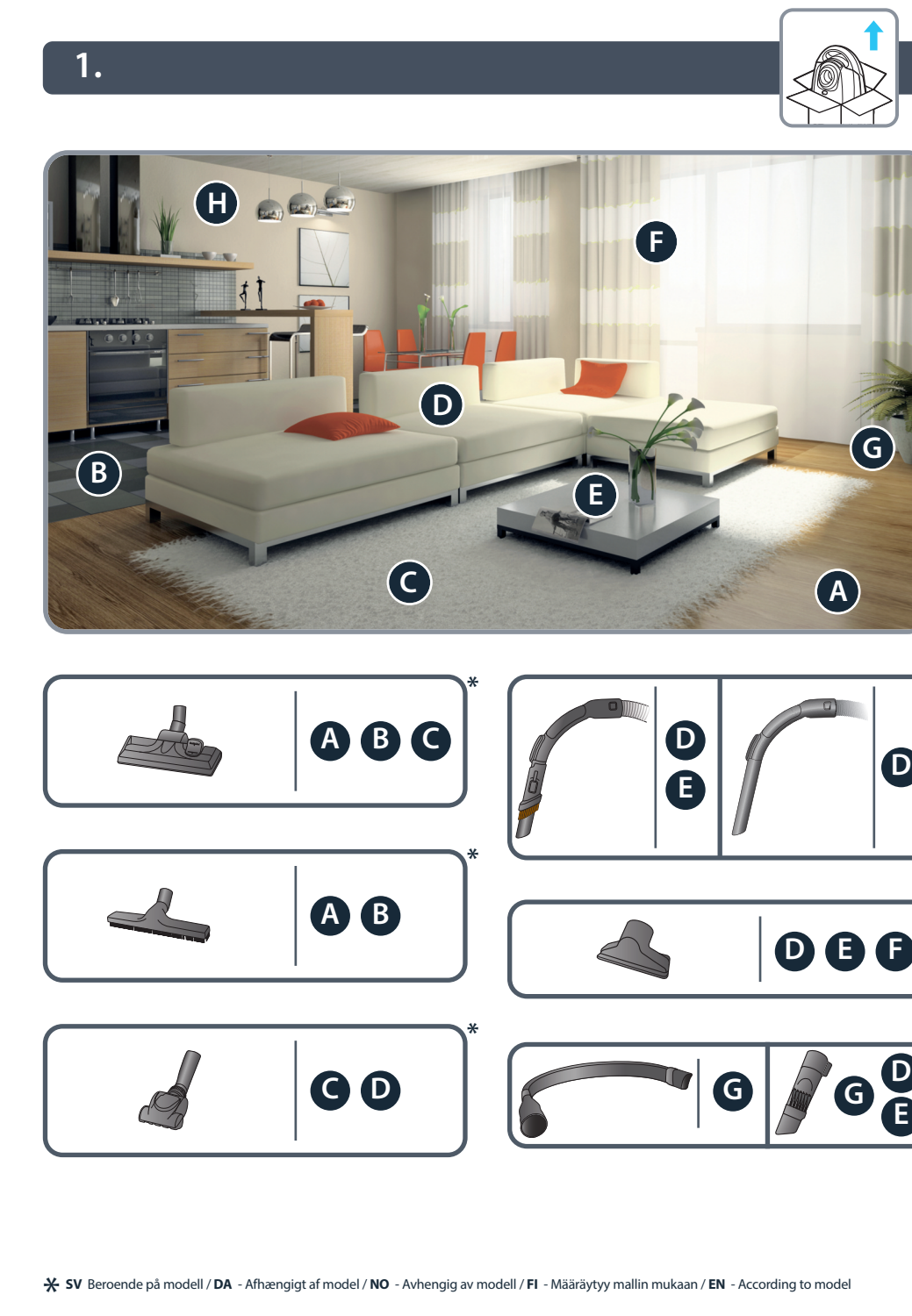
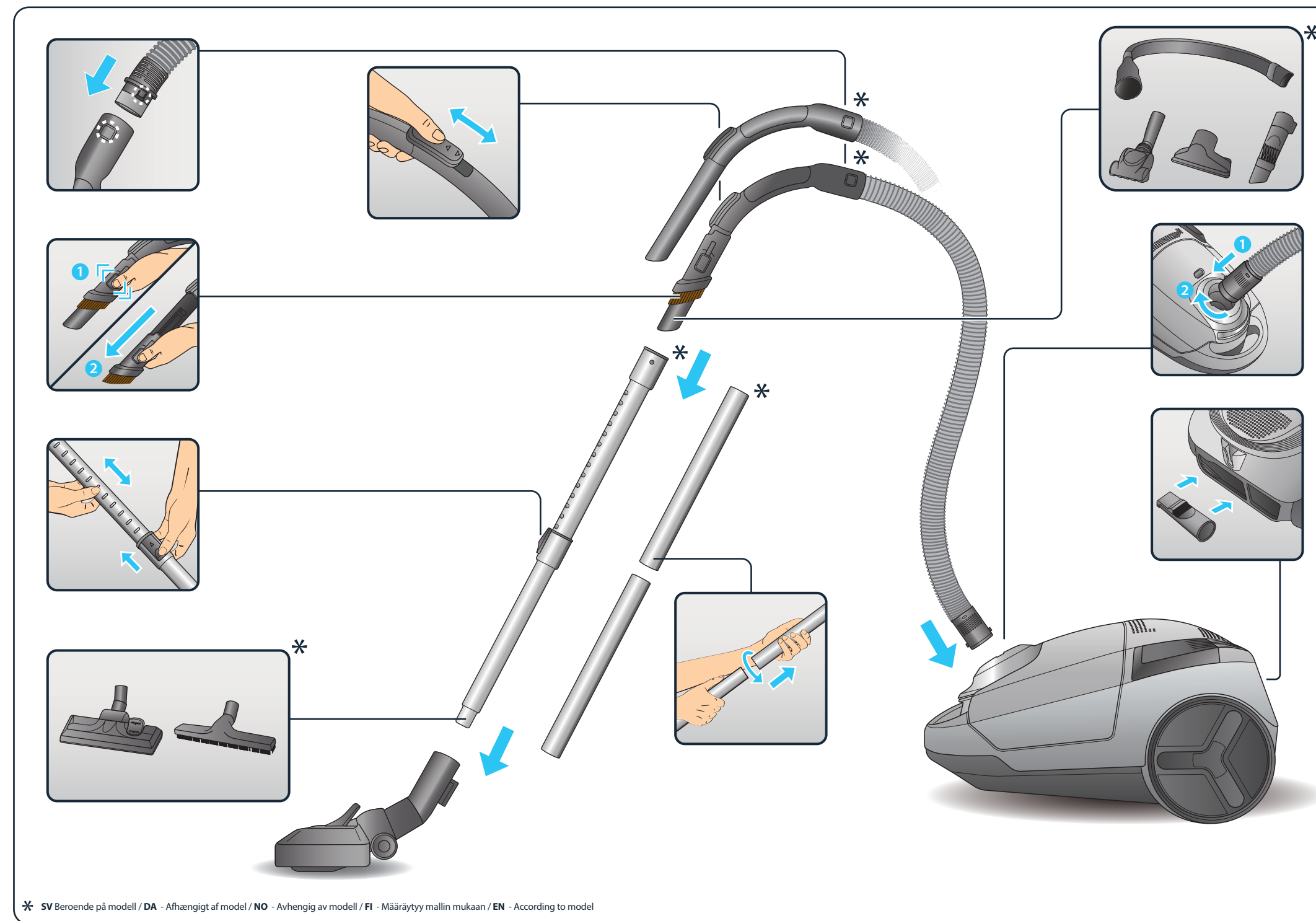


**SV** Läs alltid igenom häftet med säkerhetsanvisningar innan användning.  
**DA** Læs altid folderen med instruktioner til sikker brug, før du anvender apparatet.  
**NO** Les alltid gjennom heftet med sikkerhetsinstruksjoner før bruk.  
**FI** Lue turvallisuus- ja käyttöohjejulkaisu aina ennen käyttämistä.  
**EN** Please read carefully the "Safety and use instructions" booklet before first use.

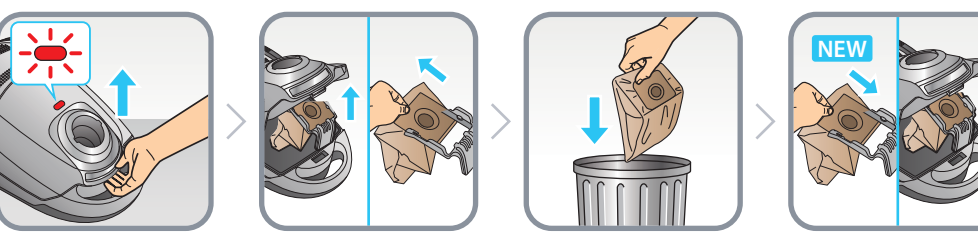
**SV** För ytterligare anvisningar.  
**DA** Yderligere information om brug.  
**NO** For ytterligere informasjon om bruk.  
**FI** Lisätietoja käyttämisestä.  
**EN** For further usage information.

1. 
2. 
3. 
4. 
5. 
6. 



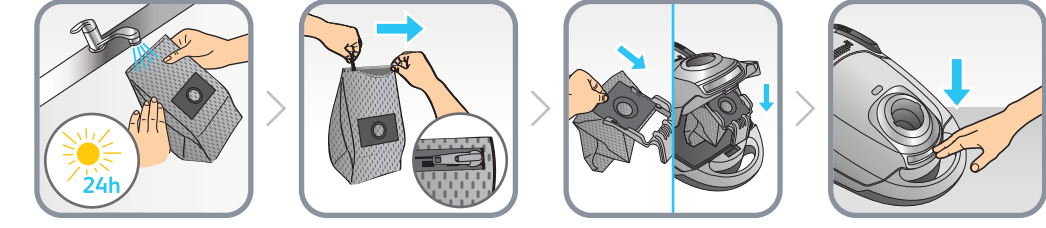
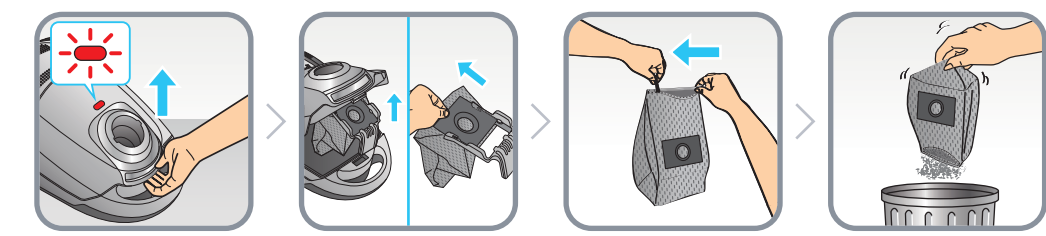
4.

**PAPER BAG** \*



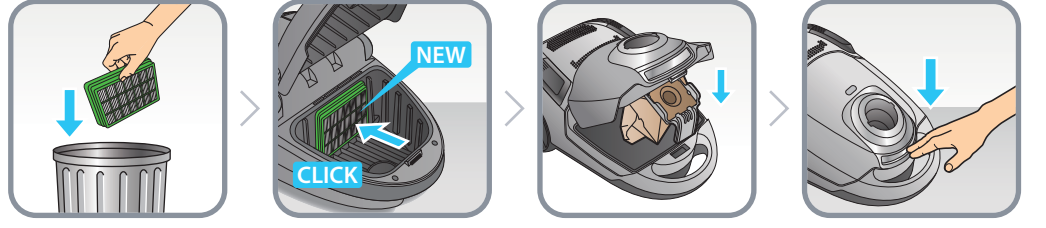
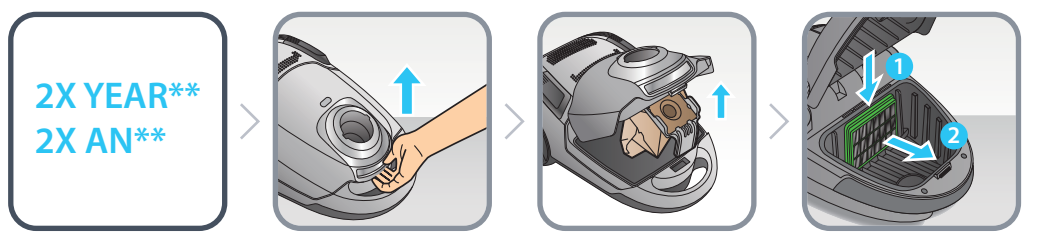
4.

**TEXTILE BAG** \*

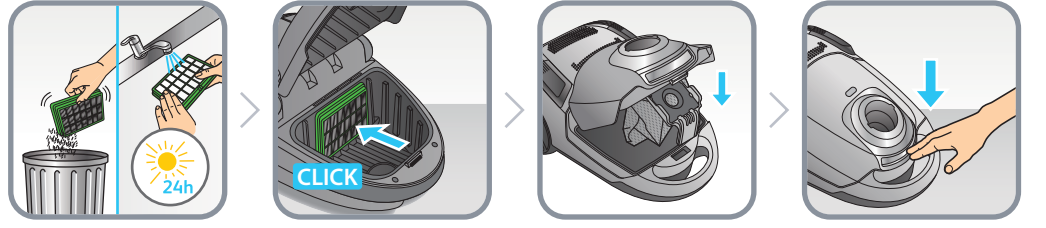
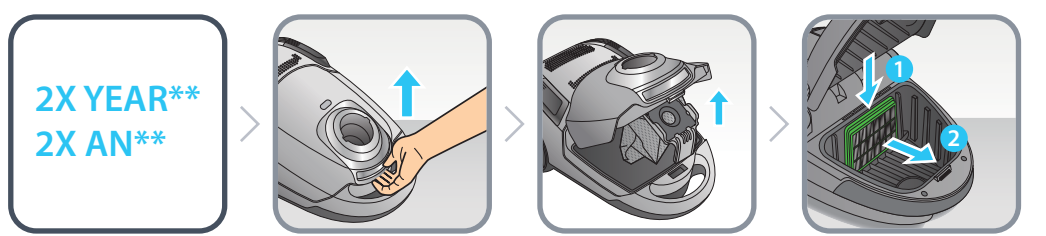


5.

\*

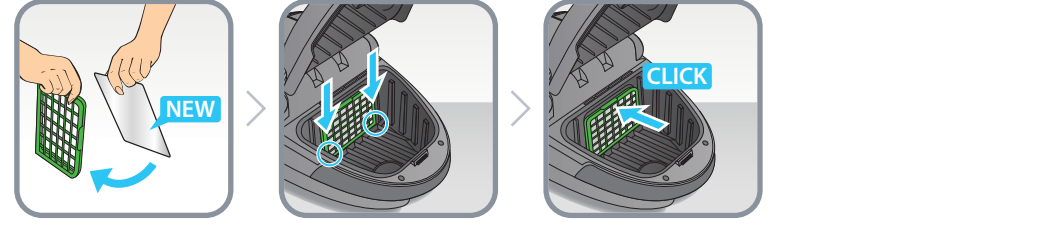
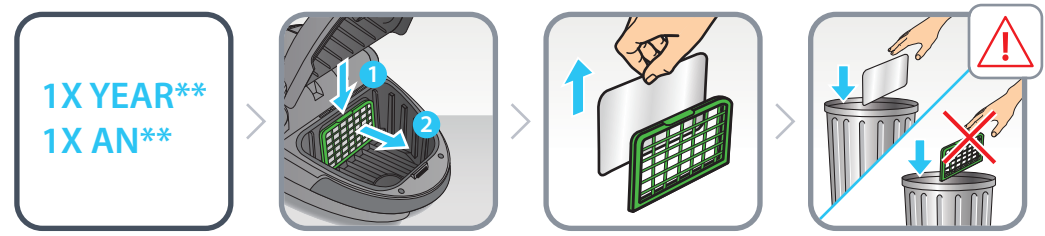


\*

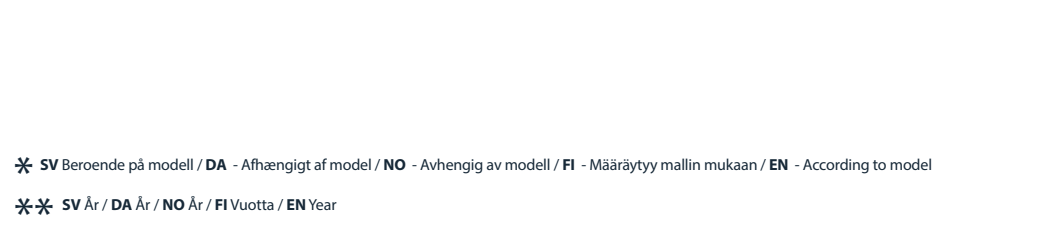
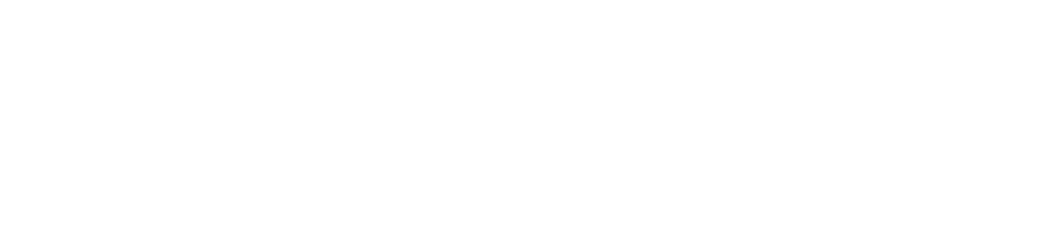


5.

\*



\*



6.



SV Bruksanvisning  
 DA Brugsanvisning  
 NO Bruksanvisning  
 FI Käyttöohjeet  
 EN Instructions of use



www.obhnordica.com

CITY SPACE

\* SV Beroende på modell / DA - Afhængigt af model / NO - Avhengig av modell / FI - Määräytyy mallin mukaan / EN - According to model

\* SV Beroende på modell / DA - Afhængigt af model / NO - Avhengig av modell / FI - Määräytyy mallin mukaan / EN - According to model

\* SV Beroende på modell / DA - Afhængigt af model / NO - Avhengig av modell / FI - Määräytyy mallin mukaan / EN - According to model

\* SV Beroende på modell / DA - Afhængigt af model / NO - Avhengig av modell / FI - Määräytyy mallin mukaan / EN - According to model

\*\* SV År / DA År / NO År / FI Vuotta / EN Year